

5.5-inch Full HD Waveform LCD Monitor



Package Option

Simple package includes



Luxury package includes additional

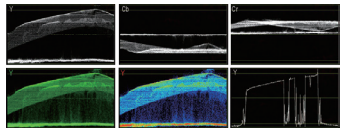


Video quality monitoring assist

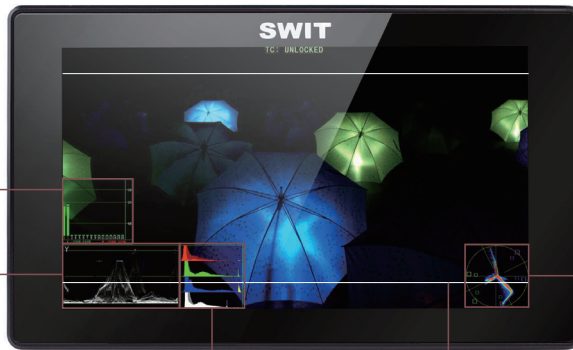
Audio Meters

SDI: 16-ch / HDMI: 2-ch
 Select any 2 channel to output
 Audio abnormal alert info display
 Display only 2-ch, 8-ch, or full 16-ch
 Chart position / Translucent adjust

Waveforms



Y/Cb/Cr/R/G/B with single line selection
 White / Green / False color display
 Larger size waveform in center
 Chart position / Translucent adjust



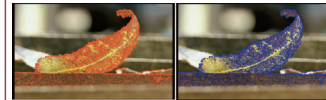
Histogram

R/G/B/Y histogram display
 100%-107% Over-exposure alert

Features

- ◆ 5.5" LCD, 1920×1080 full HD
- ◆ Optical bonding LCD panel
- ◆ All metal housing, thinner and robust
- ◆ 2K/3G/HD/SD-SDI input and loop out
- ◆ HDMI input and converted to SDI out
- ◆ 16-ch Embedded audio meters with alert
- ◆ Select any 2 audio channels to output
- ◆ Waveform Y/Cb/Cr/R/G/B and single line
- ◆ Vector scope, histogram R/G/B/Y
- ◆ Peaking focus assist (dual color)
- ◆ AFD, timecode, H/V delay, Zebra stripes
- ◆ Marker 4:3, 13:9, 14:9, 15:9, 1.85:1, 2.35:1
- ◆ False color, R/G/B/Mono, 100% colorbar
- ◆ Various DV battery plate install
- ◆ USB firmware upgrade

Peaking Focus Assist



Red / Blue lines select

Vector Scope

White / Color / False color display
 Larger size vector pattern in center
 Chart position / Translucent adjust

Scale Markers

4:3, 13:9, 14:9, 15:9, 1.85:1, 2.35:1 markers
 Mask background translucent adjust

Specification

LCD Performance		
Size	5.5 inches	
Display area	121×68mm	
Resolution	1920×1080	
Aspect ratio	16:9 (4:3 adjustable)	
Brightness	400cd/m ²	
Contrast	1000:1	
Color	16.77 million colors	
Viewing angle	Horizontal: 160° ; Vertical: 160°	
Input		
BNC × 1	2K/3G/HD/SD-SDI input	
HDMI × 1	HDMI 1.3 input	
Mini USB × 1	Firmware upgrade	
Output		
BNC × 1	2K/3G/HD/SD-SDI loop output or HDMI converted to SDI output	
3.5mm × 1	SDI, HDMI embedded audio output	
Video Format		
SDI	SMPTE 2048-2	2048×1080p (23.98 / 24 / 25 / 29.97 / 30 / 50 / 59.94 / 60) 2048×1080i (50 / 59.94 / 60)
	SMPTE-425M	1080p (60 / 59.94 / 50)
	SMPTE-274M	1080i (60 / 59.94 / 50)
	SMPTE-RP211	1080p (30 / 29.97 / 25 / 24 / 23.98)
	SMPTE-296M	1080psf (30 / 29.97 / 25 / 24 / 23.98)
	SMPTE-125M	720p (60 / 59.94 / 50)
	ITU-R BT.656	480i (59.94)
HDMI		480i / 576i / 480p / 576p
		1080i (60 / 59.94 / 50)
		720p (60 / 59.94 / 50)
		1080p (60 / 59.94 / 50 / 30 / 29.97 / 25 / 24 / 23.98)
General		
Working voltage	DC / battery 6.5V-36V	
Power consumption	12W	
Working temperature	-10 °C~+50 °C	
Working humidity	10%~90%	
Storage temperature	-15 °C~+60 °C	
Storage humidity	10%~90%	
Dimensions	151×91×32mm	
Net weight(main body)	375g	